



LOADING GUIDE COVERING LOADS

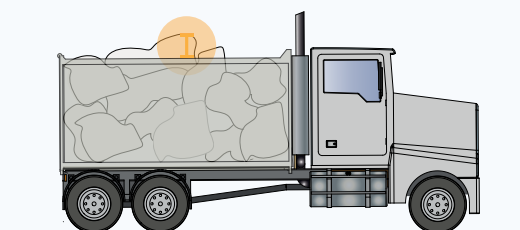
A load cover is a protective covering used to secure and protect freight during transport. They are usually made from durable materials such as canvas or vinyl. They are used to protect from dust or other environmental factors and form part of a load restraint system for loads that may become dislodged by air movement whilst in transport, such as sand, soil or other fine/light loose bulk loads. Some useful tips are:

- ✓ Cover loose bulk loads that extend above containment walls
- ✓ Loads can still dislodge even if they don't extend above the walls
- ✓ Use wetting or skinning agents with proper load covers for long trips
- ✓ Ensure lights, reflectors, number plates, and rear markings are visible
- ✓ Check covers for loose sections or tears that might pose a hazard.



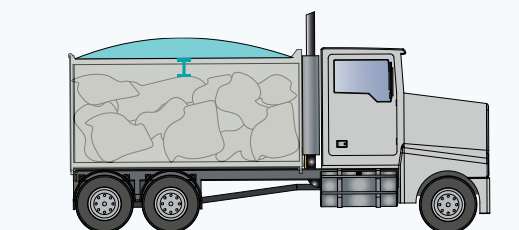
⚠ RISKS

⚠ BULK LOAD EXCEEDING CONTAINMENT

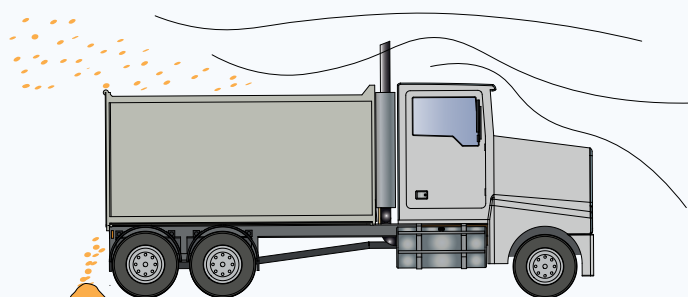


✓ GOOD PRACTICE

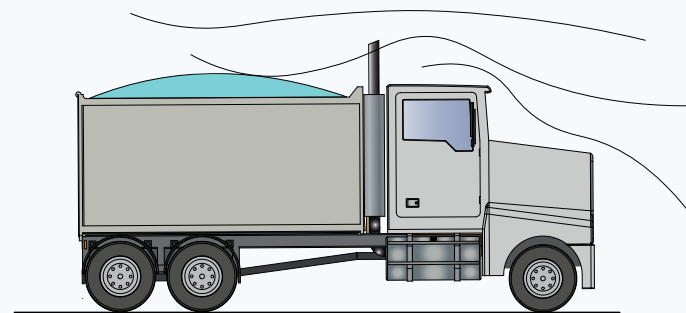
✓ BULK LOAD BELOW CONTAINMENT WALLS WITH NETTING



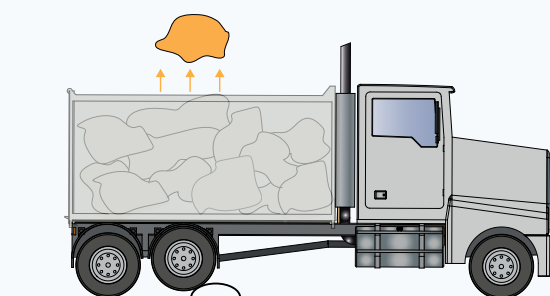
⚠ LOOSE LOAD LEAKING POWDER



✓ LOOSE LOAD COVERED WITH MESH/TARPAULIN



⚠ LOAD BECOMING DISLODGED OVER BUMP



✓ LOAD CONTAINED WHILE GOING OVER BUMP

