

Heavy Vehicle Industry Safety Survey 2024



Agricultural Industry

The majority of responses came from:

Role **58% Drivers** **32% Managers**



Experience

59% 20+ years
11% 15-19 years
10% 1-5 years or less



Transporting

54% Locally
19% Interstate
27% Intrastate



Based in

42% VIC
23% NSW
13% QLD



Business size

55% 2-10 employees
16% 1 employee



Safety insights



88%

of respondents feel that employees can raise concerns about safety issues.



85%

of respondents stated that incidents are reported.



85%

of respondents believe that safety is an important part of all business activities and decision making.



83%

of respondents agree that management are visible in the workplace and demonstrate an interest in safety.



83%

of respondents agree that employees understand what is required to fulfil their safety responsibilities.



77%

of respondents feel that work is scheduled in a way that reduces time pressures.



95%

of respondents stated that drivers frequently inspect the vehicle for potential safety defects prior to operating.



90%

of respondents agree that drivers frequently assess risks associated with the driving task (e.g. weather/road conditions).



85%

of respondents agree that employees are able to say no when asked to undertake an activity if they believe it is unsafe.



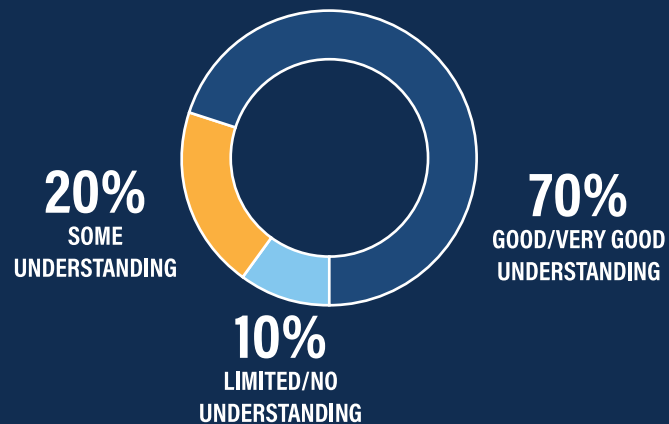
77%

of respondents agree that safety investigations focus on improving safety rather than blaming an employee.

Heavy Vehicle Industry Safety Survey 2024

Agricultural Industry

Understanding of Chain of Responsibility



Safety Communication

80% of respondents agree that safety related information is communicated to all staff.

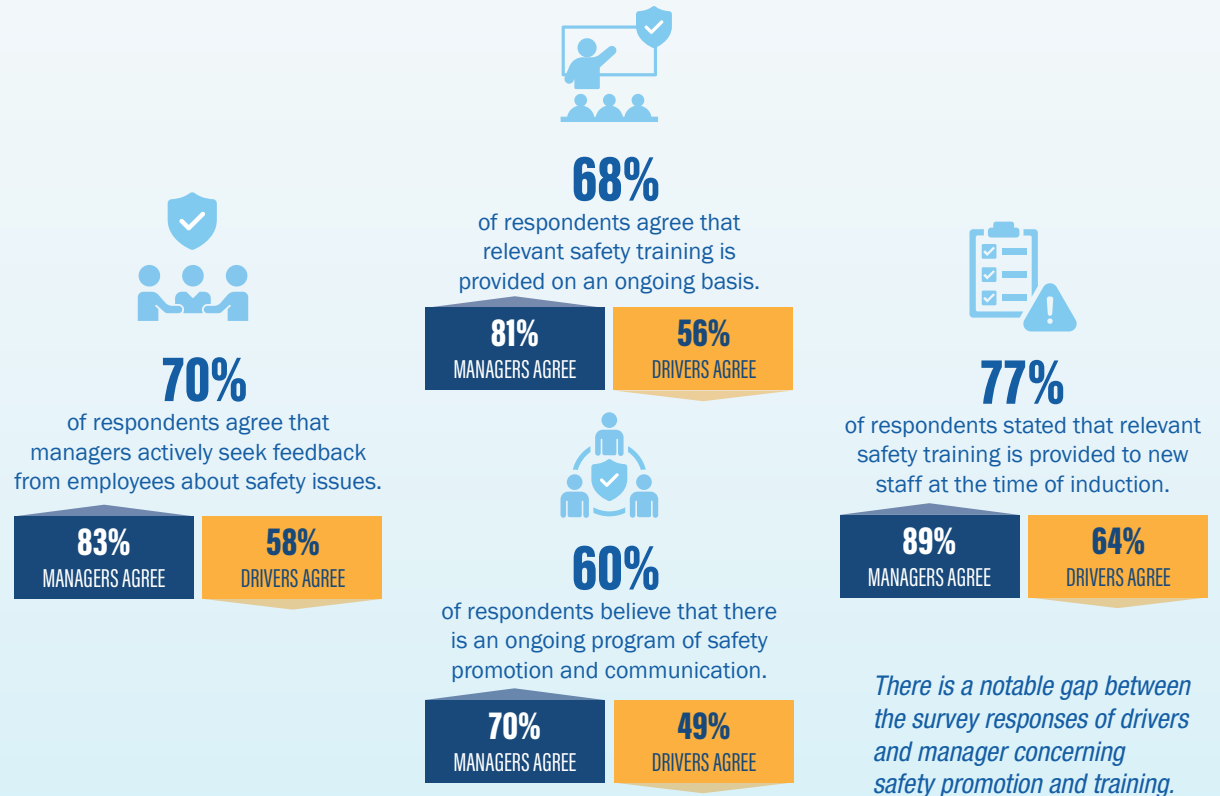
92% MANAGERS AGREE

69% DRIVERS AGREE

Safety communications appear to be significantly less effective at reaching respondents in driver and loaders roles.



Safety promotions and training



NHVR advice and guidance materials

