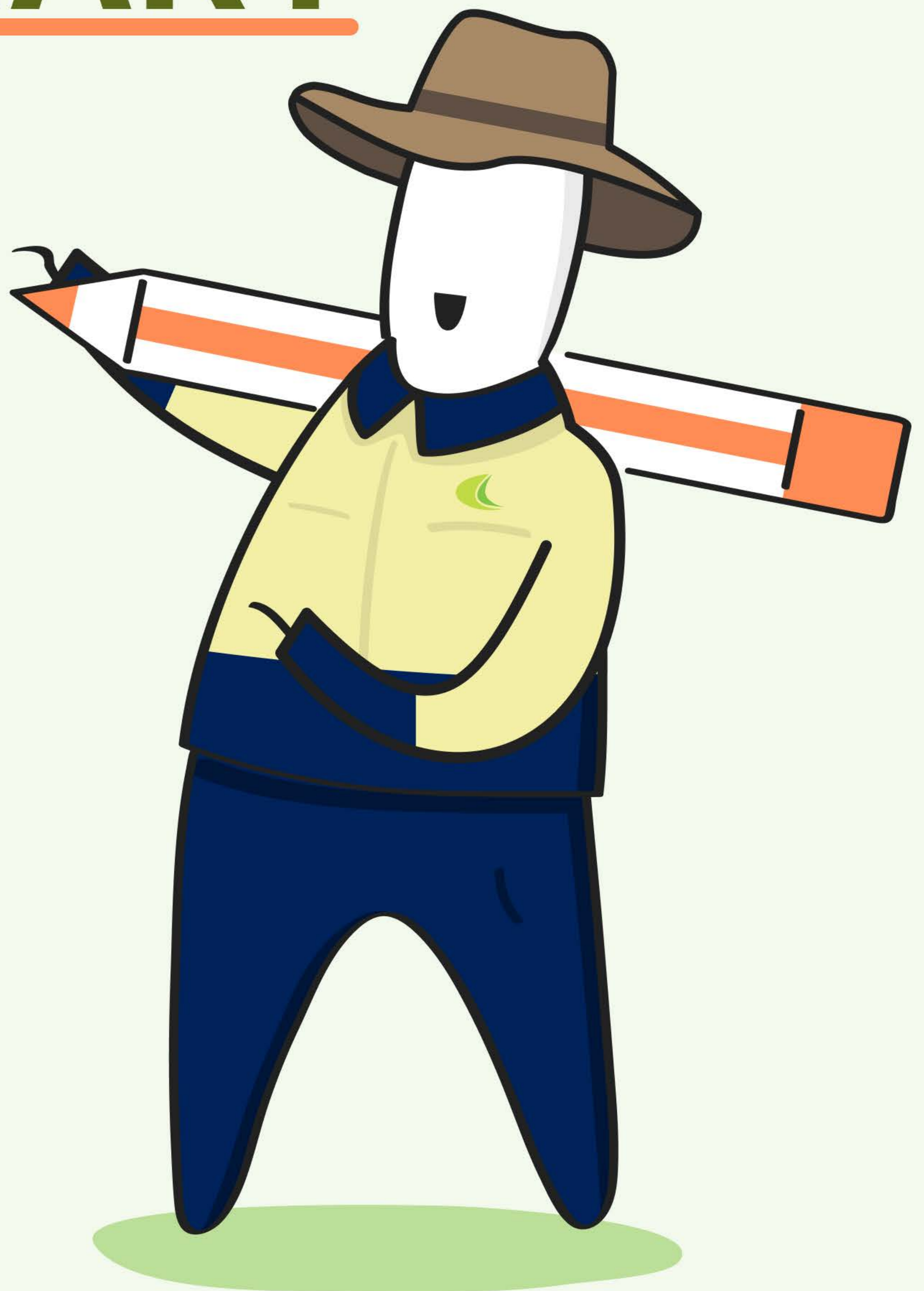


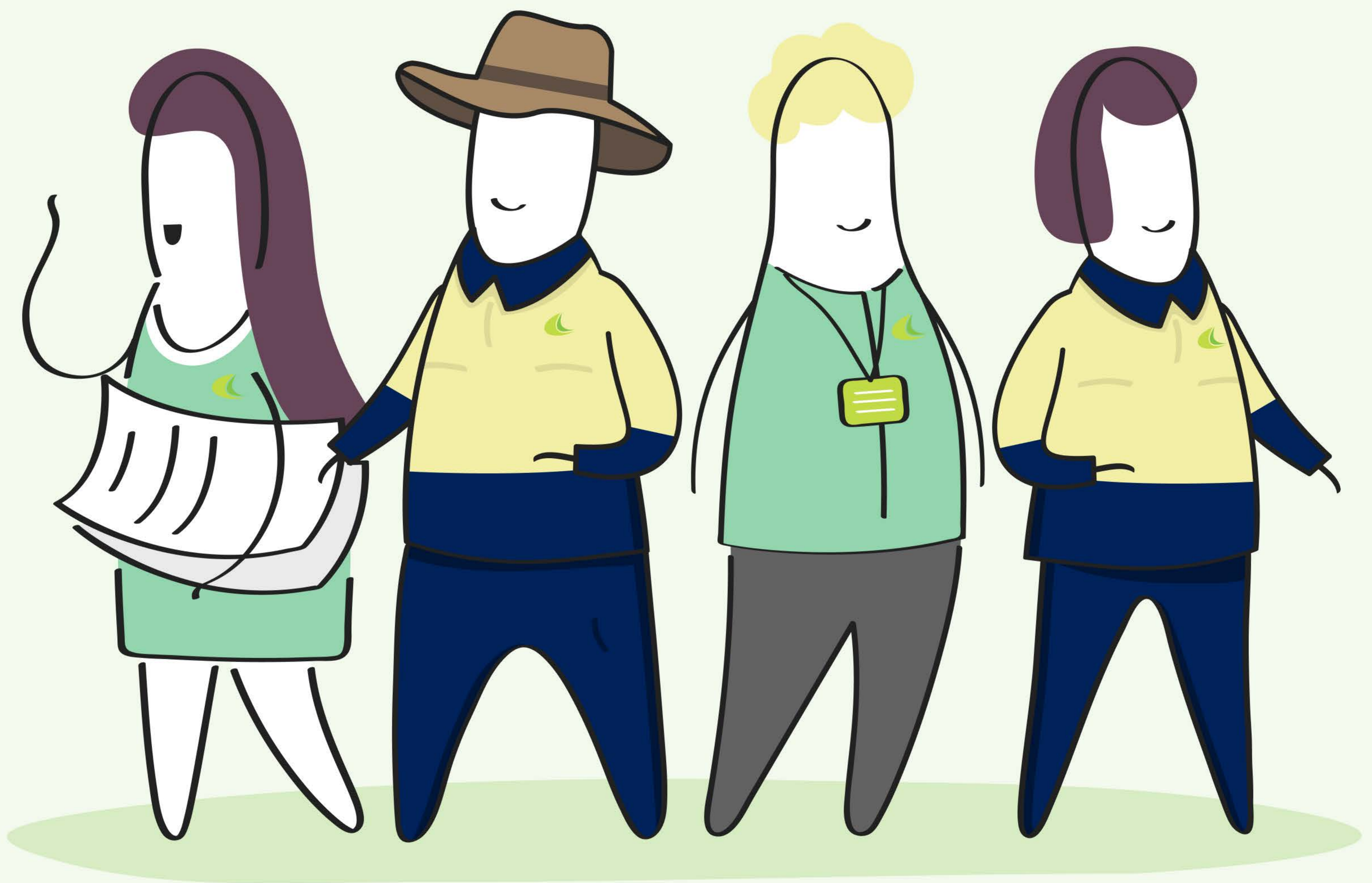
**THERE DOESN'T
HAVE TO BE AN
INCIDENT TO BREACH
THE PRIMARY DUTY**



**THERE'S ALWAYS
SOMETHING WE
CAN DO TO ENSURE
PUBLIC SAFETY,
AND MEET
THE PRIMARY
DUTY.**



MANAGING OUR TRANSPORT SAFELY

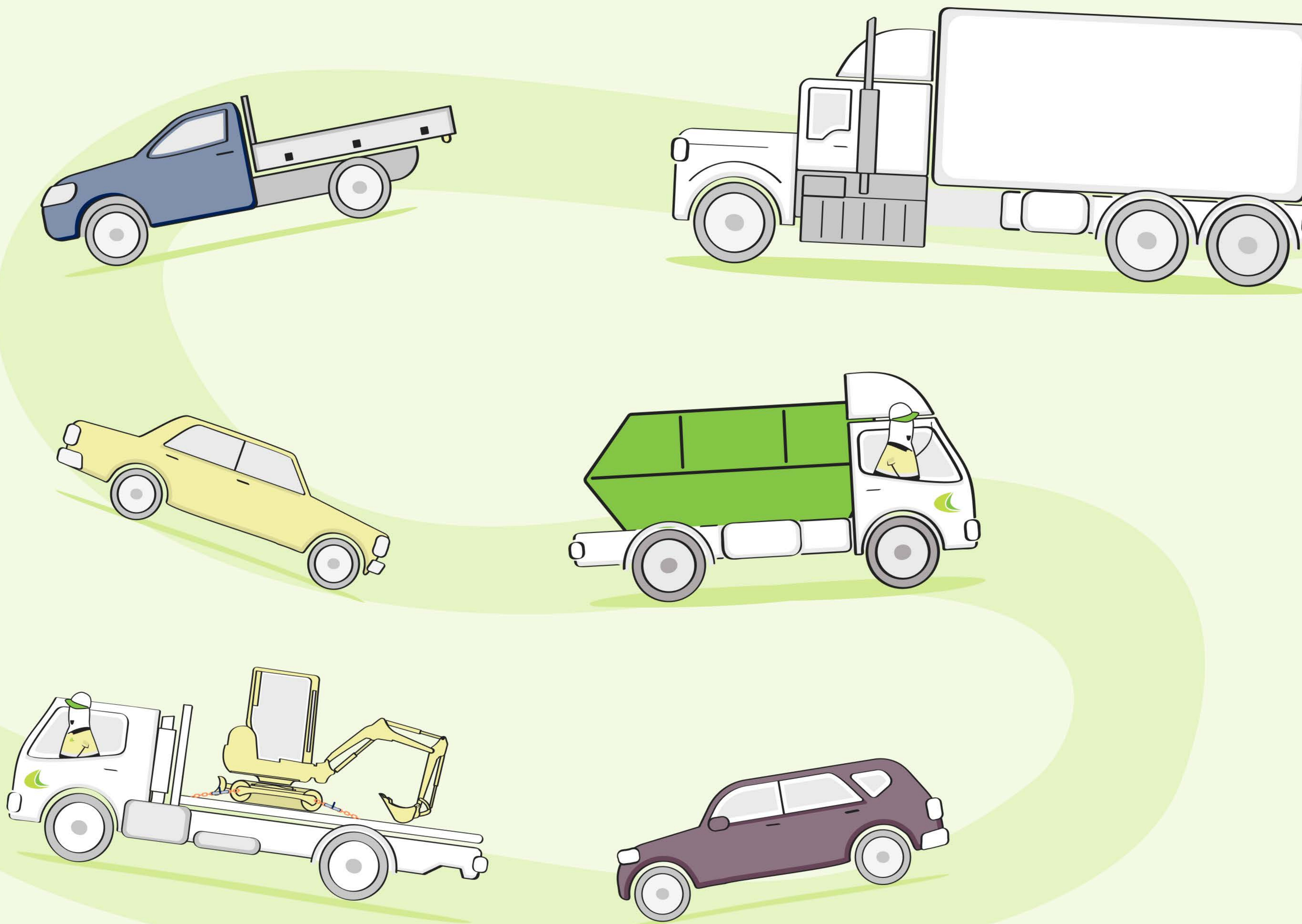


**STARTS AND
FINISHES WITH
COUNCIL.**

**ANYTHING THAT
COULD BE DONE
SHOULD BE DONE.**

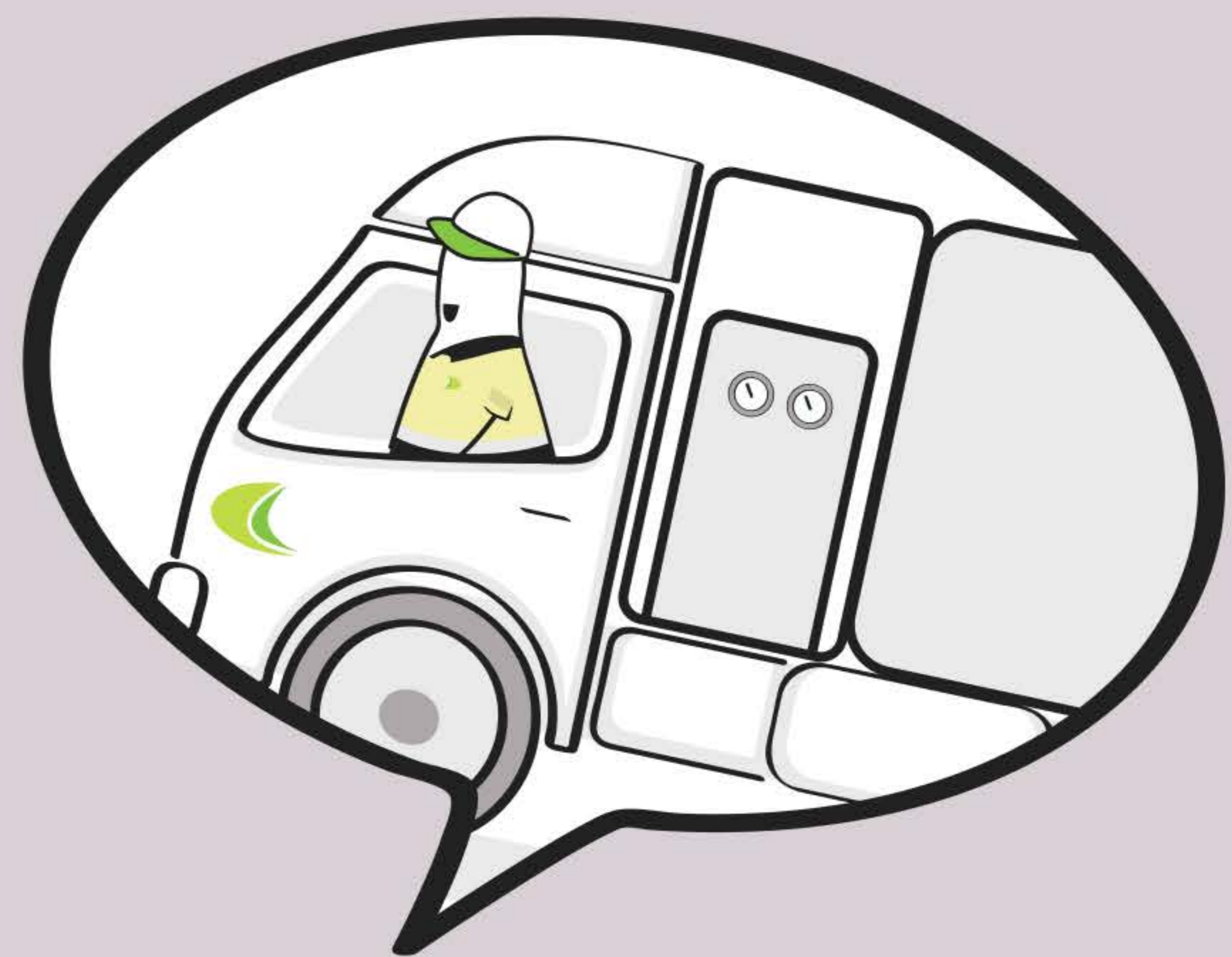


The Chain of Responsibility benefits all road users.



**You, friends, family, neighbours,
colleagues, and the wider
community.**

**EVERY DECISION AND
EVERY ACTION HAS
THE ABILITY TO
INFLUENCE HEAVY
VEHICLE SAFETY.**



**Every party involved in the transport
of goods by a heavy vehicle must
work together to ensure that
transport activities don't put the
public at risk.**

