

# RAVRAT

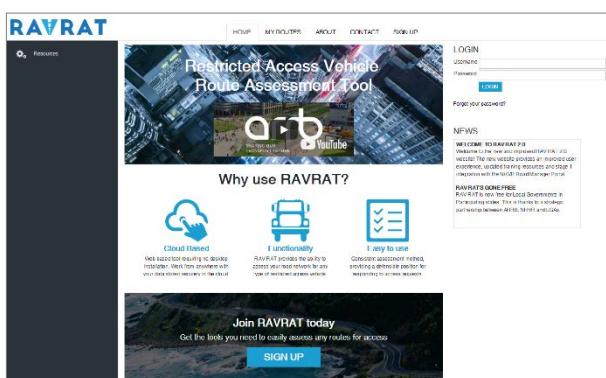
## The new RAVRAT 2.0

There are big changes to the Restricted Access Vehicle Route Assessment Tool (RAVRAT).

### What is RAVRAT?

RAVRAT is a cutting edge on-line tool capable of performing route assessments for restricted access vehicles. The tool was designed to assist Local Governments when assessing routes.

The tool provides Local Governments with a consistent assessment methodology, providing a defensible position when responding to access requests.



### What are the new features of RAVRAT?

RAVRAT has just launched version 2.0. The first big change is RAVRAT is now free for Local Governments from participating jurisdictions through the support of NHVR and the Local Government Associations.

The second big change is RAVRAT has just launched a new user interface for the website giving users a far greater user experience when using RAVRAT. Finally, we have implemented stage 1 integration of RAVRAT into NHVR's Road Manager Portal with full integration planned for the near future.

### Partnership between ARRB and the NHVR

In August 2018 the Australian Road Research Board (ARRB) and the National Heavy Vehicle Regulator (NHVR) formed a partnership to deliver RAVRAT to Local Governments for free.


This partnership was supported by the RAVRAT Governance Committee which consists of representatives from Local Government Associations.

### Features of RAVRAT


RAVRAT provides Local Governments with a simple to use and consistent route assessment tool. Local Governments will experience a reduction in assessment times as RAVRAT stores and reuses information from past assessments. RAVRAT currently incorporates three main route assessment modules with the aim to develop more modules in the future.

The existing RAVRAT route assessment modules are:


#### Local considerations

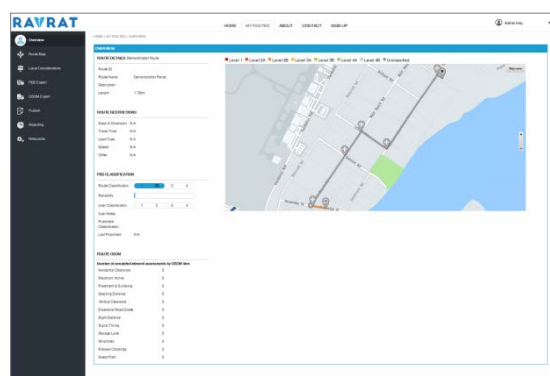
 The Local Considerations feature allows Road Managers to input non-engineering related considerations that may affect portions of the route. These considerations include restrictions such as mass & dimension, travel time, speed, etc.

#### PBS expert

 The PBS Expert is the main feature for RAVRAT, it provides a structured methodology for assessing a route for any restricted access vehicle. This methodology is based on the *Performance-Based Standards Scheme – Network Classification Guidelines* which is used to determine the level of access possible on a route.

#### OSOM expert

 The OSOM Expert was developed specifically for assessing routes for Oversize and/or Overmass vehicles. This module uses structured methodology based on guidelines developed by ARRB and Transport for NSW.



### For more information

If you would like to register for the RAVRAT services, please visit <http://ravrat.com/sign-up.aspx>

If you would like more information about using RAVRAT please email [ravrat@atlab-arrb.com](mailto:ravrat@atlab-arrb.com)