

9 December 2024

Approved temporary variation for heavy vehicles on Spirit of Progress Bridge, Hume Highway, Albury

Dear Permit holder,

This letter is to inform you under section 177 of the *Heavy Vehicle National Law*, the National Heavy Vehicle Regulator (NHVR) in consultation with Transport for New South Wales (TfNSW) will be temporarily amending access for certain heavy vehicles due to works being required along Southbound travel over Spirit of Progress Bridge, Hume Highway, Albury.

To limit impacts to motorists, repairs will be carried out at night with the southbound bridge closed to traffic weekdays and weekends between 8pm and 6am from Monday 2 to Saturday 7 December and from Wednesday 11 to Tuesday 17 December, weather permitting.

The detour for southbound heavy vehicles during the period of the closure is via *East Street, Atkins Street, Hume Street, Wodonga Place, Lincoln Causeway and returning to the Hume Highway on the High Street ramp.*

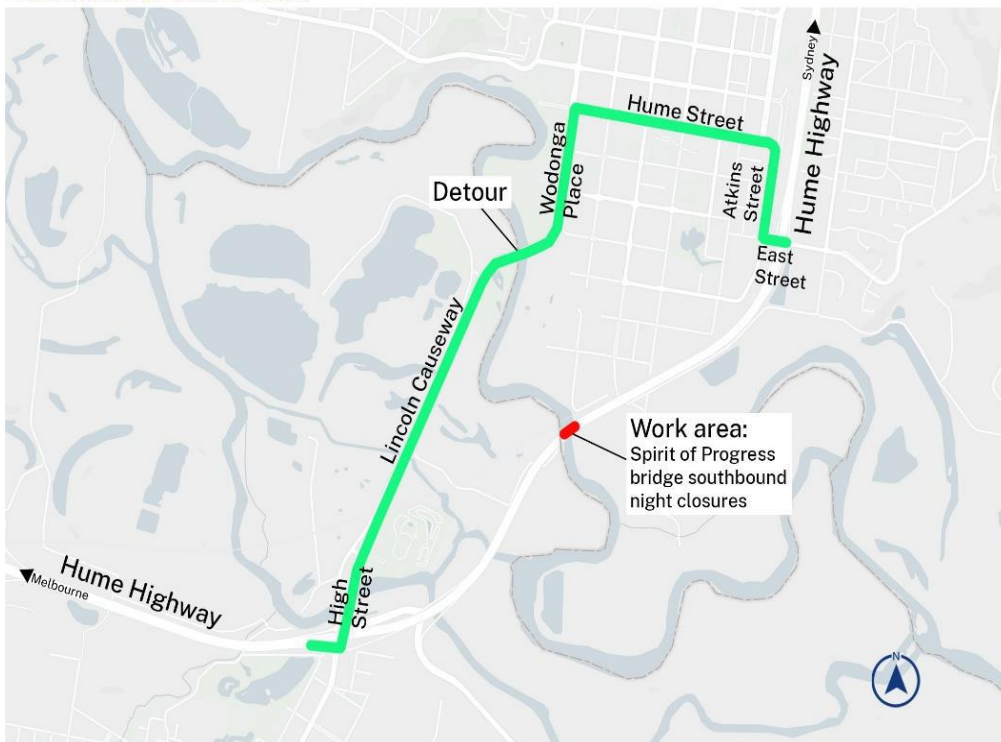
Current heavy vehicle access permit holders with route specific access that includes southbound travel over Spirit of Progress Bridge, Hume Highway, Albury and are impacted by this closure would be required to utilise this detour. The variation letter is applicable to the following vehicle combinations–

- HML 25/26m B-Double combinations
- HML PBS Level 2A combinations
- PBS Level 2B combinations
- PBS Level 3A combinations

Other restricted access heavy vehicles operating under a heavy vehicle access permit **must not travel** off the approved route listed in their permit. An updated permit must be obtained from the NHVR.

Approved Alternate Route

Location of work area



Variation letter conditions

- All existing permit conditions must be adhered to whilst utilising this approved alternative route.
- Operators are responsible for ensuring the relevant third-party approvals are obtained for the alternate route prior to travel (if applicable).
- The use of the detour and the variation is only applicable during the planned period of the closure on Spirit of Progress Bridge, Hume Highway, Albury.

This variation letter is valid for the duration of your current permit. A copy of this letter must be carried along with the permit and produced to an authorised officer upon request.

For more information on the current restrictions please visit <https://www.livetraffic.com/>

Yours sincerely,

A handwritten signature in purple ink that reads "R. Matthews".

Rochelle Matthews
Manager Access
National Heavy Vehicle Regulator