

coles



AN NHVR AND COLES SUPPLY CHAIN PARTNERS INITIATIVE

WHY YOU SHOULDN'T OVERTAKE A TURNING TRUCK

The National Heavy Vehicle Regulator, the Coles Group and its supply chain partners have joined forces to help make Australia's roads safer for all users.

Turn over to learn how to safely overtake heavy vehicles, and visit weneedspace.com.au to hear from truck drivers why they need space to keep you safe.

WE NEED SPACE TO KEEP YOU SAFE

WENEEDSPACE.COM.AU

[#WENEEDSPACE](https://twitter.com/WENEEDSPACE)

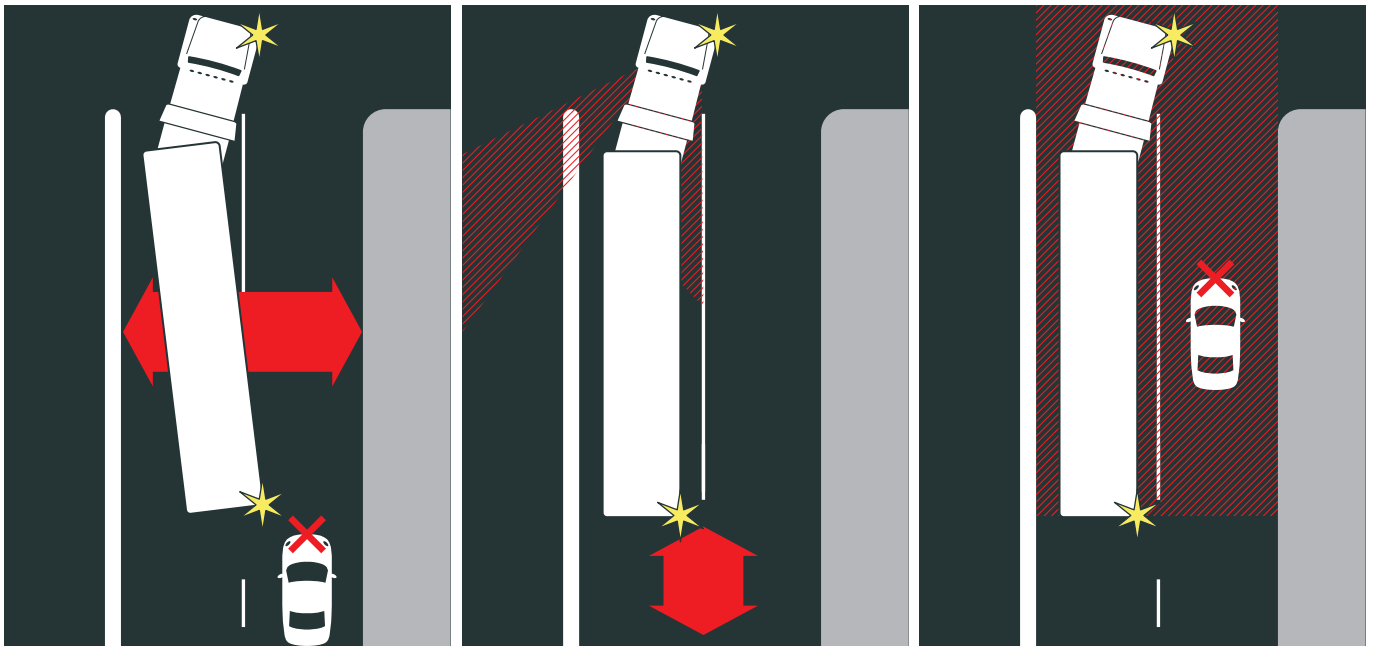
WE NEED SPACE TO KEEP YOU SAFE

Trucks and other vehicles over 7.5 metres long that have a DO NOT OVERTAKE TURNING VEHICLE sign on the back are legally allowed to take up more than one lane to turn at corners, intersections and roundabouts. They can even use a right turn only lane to turn left or a left turn only lane to turn right.

So whether you're turning left, right or you're at a roundabout, don't drive past or overtake a turning truck unless you're absolutely sure it's safe to do so.



Why shouldn't you overtake a turning truck?



Trucks' front and back wheels are so far apart, they often need to swing wide when they turn. They may need to use two or more lanes. They'll start to move across towards their turning lane as soon as they can to let you know you need to give them space.

Once the truck starts to turn, its mirrors will no longer be directed at the road behind. The driver won't be able to see you, even if you're a safe following distance away.

If you move into the space inside the turning truck, you may get hit. It might look like there's plenty of room, but the gap will close quickly once the truck starts to turn.

What should you do if a truck indicates to turn?

1

Give the truck driver the space they need to make the turn. Even if it looks like the left or right turn lane is vacant, hang back so they can see you and you're out of harm's way.

2

Be patient. Wait until the truck has completed its turn before you continue on your way.

3

If a truck is turning into the road you're in, stay well back from the intersection to give the driver more road space.